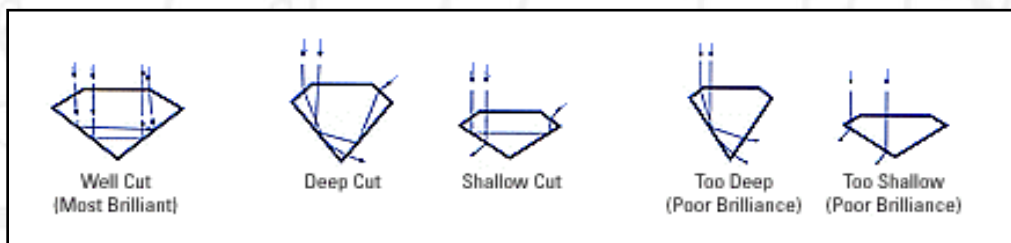


The Ideal Cut

For a diamond to exhibit optimum brilliance, the crown should be cut properly to show fire, the pavilion cut properly to show brilliance, and the facets aligned in the proper symmetry to show scintillation. Should any of these three elements be cut incorrectly, the diamond will not display that beautiful sparkle it is so well known for.

The best diamond cut will allow light to enter the stone through the table, reflect and refract inside the stone and then exit the stone again through the table. When the diamond is not well cut, the light that enters the stone could leak through the pavilion, below the girdle, or perhaps through the side of the crown above the girdle. Poorly cut diamonds will look dull and lifeless. If they are cut too deep, they often show a dark center and are called “nail heads”. If they are cut too shallow, they show a lighter circle around the center and are called “fish eyes”.



The perfectly cut round diamond is known as the Ideal Cut and the measurements of an Ideal Cut diamond are as follows:

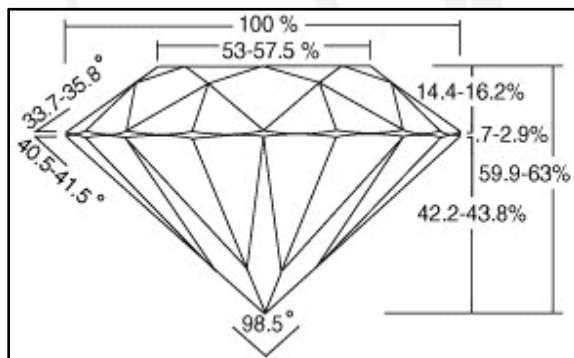
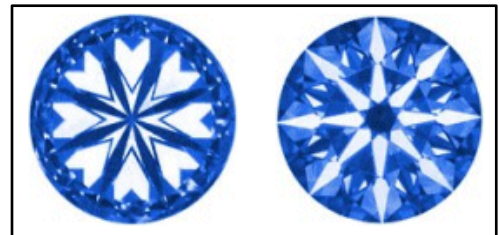


Table:	from 52.4% to 57.5%, preferably 53%
Crown angle:	from 33.7 to 35.8, preferably 34.5
Crown height:	from 14.4% to 16.2%, preferably 16.2%
Pavilion depth:	from 42.2% to 43.8%, preferably 43.8%
Pavilion angle:	from 40.5 to 41.5, preferably 40.75
Total depth:	from 59.8% to 62.4%, preferably 61.7%
Girdle:	thin to medium
Culet size:	none or very small facet

The most desired Round Brilliant Cut Diamond

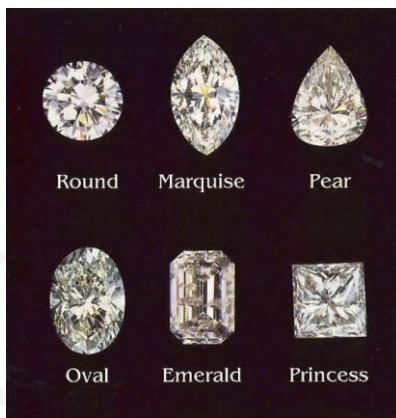
The flawless combination of these mathematical calculations will deliver a round brilliant cut diamond with the “cupid effect”, the much desired “Hearts and Arrows” appearance. Looking at the diamond through a magnifying lens, the facets will form a visual pattern of eight perfect hearts when viewed through the pavilion, and eight perfect arrows when viewed through the crown. A diamond that is cut this well, will be incredibly brilliant as it will have a 98% light return.



The Ideal Cut

Due to the additional weight loss from a rough diamond to create the ideal cut diamond, only a mere 1% of all Round Brilliant cut diamonds are cut as “Hearts and Arrows” diamonds. These diamonds are therefore more costly than diamonds that do not measure up to these dimensions. However, buyers who usually demand excellence, will appreciate the perfection that has gone into the cut of a “Hearts and Arrows” diamond. For more information on Hearts and Arrows diamonds, visit www.heartsandarrows.com

Other Shapes of Diamond Cuts



A diamond is the hardest of all minerals and therefore can reflect light exceptionally well. The symmetrical shape of the Round Brilliant cut is the best design to bring out the natural brilliance of the diamond as this shape could reflect almost all the light that enters the stone.

A diamond is also cut in other shapes. When the shape is not round, it is called a Fancy Shape. Classic styles of these fancy shapes are: oval, pear, marquise, emerald cut, princess cut. Other shapes are Asscher, heart, cushion cut, trillion, radiant, and a variety of flower cuts.